
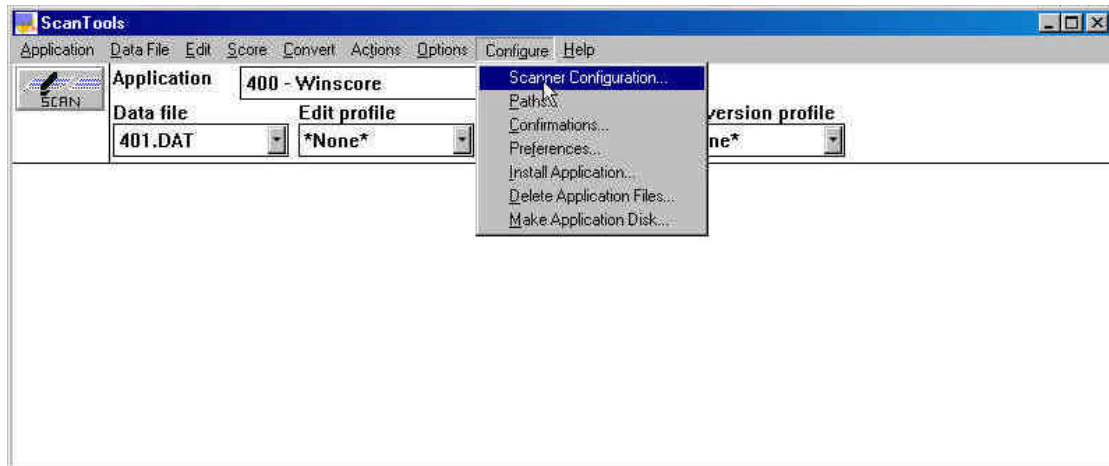


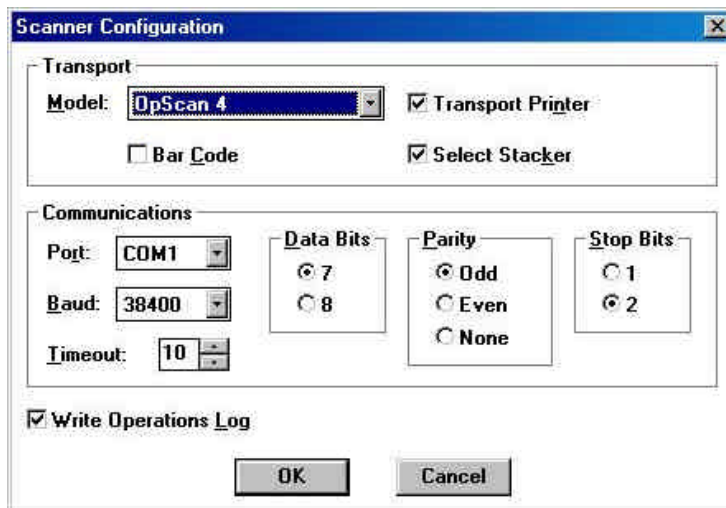
OPSCAN 4 SCANNER SET UP

After the Scan Tool 2.3 is installed, the scanner configuration should be set up as follows:

- 1) To start the Scan Tools Application program, double click the Scan Tools icon  in the c:\SFW directory.
- 2) Click on the **Configure** menu and select **Scanner Configuration**.



- 3) When it is selected, the Scanner Configuration Menu is activated. Change the scanner's configuration according to the sample which is shown as below:



- 4) Click OK to complete the configuration, and exit the Scan Tools program.